

- Participants will learn current brain research specific to the link between emotional trauma and behaviors associated with traumatic disruptions in attachment
- Participants will learn how to integrate complementary therapies per the STAT™ (Synergistic Trauma and Attachment Therapy) Model
- Participants will learn how to integrate families into the treatment and healing process

## Day One

### The Etchings of Trauma – The History, Theory and Profile of the Traumatized Brain

Etchings in the Brain – The Ways in which Trauma Impacts Brain Development and Behavior

~ Lark Eshleman, Ph.D.

RAD and Trauma: Differential Diagnosis

~ John Tardibuono, Ed.D.

Family Therapy and Attachment Traumas

~ Kate Langhart, LCSW

## Meals

Continental Breakfast ~ *Provided*

Lunch ~ *On Your Own*

Friday Evening Dinner ~ *Reservations will be made for those who wish to dine together, however the cost is **not** included in the workshop registration*

## Day Two

### Integrative Therapy – A Mind-Body Systems Approach to Trauma

How a Healthy Attachment Figure Supports Trauma Healing - An Introduction to STAT™

~ Lark Eshleman, Ph.D.

Integrating Neurofeedback into the STAT™ Model of Treatment

~ David Cortes, MA

EMDR (Eye Movement Desensitization and Reprocessing) and other Bilateral Stimulation Techniques

~ Lark Eshleman, Ph.D.

Narrative Therapy Integrated into Body Work and Trauma Healing ~ Lark Eshleman, Ph.D.

Families as the Heart of Healing

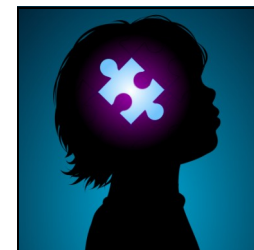
~ John Tardibuono, Ed.D.

## Workshop Leaders

- **Lark Eshleman, Ph.D.** ~ Trauma and Attachment Child Psychotherapist, Certified School Psychologist, ATTACH\* Board Member
- **John Tardibuono, Ed.D.** ~ Psychologist
- **David Cortes, MA** ~ Neurofeedback Specialist
- **Kate Langhart, LCSW** ~ Family Therapist

\*ATTACH is the Association for the Treatment and Training in the Attachment of Children

The Institute for Children and Families (ICF) is a nationally renowned center for the treatment of emotional trauma, such as Post Traumatic Stress Disorder (PTSD) and Reactive Attachment Disorder (RAD), and traumatic breaks in attachment and bonding. ICF is also noted for its treatment of clients with ADHD, often without the use of medication.



ICF's STAT™ model is a carefully woven combination of therapies including neurofeedback (EEG Biofeedback), narrative and structured play therapies, trauma-based therapeutic bodywork, Eye Movement Desensitization and Reprocessing (EMDR), family therapy and education.

ICF has helped children and their families to dramatically improve their quality of life since 2000 and has a proven track record of significant, life-affirming success.

ICF provides a comprehensive personalized treatment program to address the needs of each child and family, focusing on attaining and maintaining positive change and growth.

Additionally, we offer personal and professional consultations in person or by telephone. To find out more, please visit us online at [www.instituteforchildren.org](http://www.instituteforchildren.org)

## Registration

Name: \_\_\_\_\_

Organization: \_\_\_\_\_

Address: \_\_\_\_\_

City, State, Zip: \_\_\_\_\_

Area Code+Phone : \_\_\_\_\_

Email: \_\_\_\_\_

### Healing Disruptions in Attachment Traumas

Friday, April 30 & Saturday, May 1, 2010

Two Day Workshop                      \$250

One Day Workshop                      \$130

**Register for the one-day workshop before  
April 1, 2010 and save \$10.**

**Register for the two-day workshop before  
April 1, 2010 and save \$30.**

Please Call for Group Rates.

*(Five or more people registering together.)*

Two Day Workshop                      \$ \_\_\_\_\_

Day 1 Only                                      \$ \_\_\_\_\_

Day 2 Only                                      \$ \_\_\_\_\_

Early Registration Discount              \$ \_\_\_\_\_

Total Due                                      \$ \_\_\_\_\_

*Please forward completed registration forms with  
checks payable to*

The Institute for Children and Families  
1862 Charter Lane, Suite 100  
Lancaster, PA 17601

*For additional information or to make credit card  
payments, please call ICF at  
717-290-7040*

## CE Credits

### Psychologists

Continuing Education credits have been requested for licensed psychologists from the Pennsylvania State Board of Psychology.

### Social Workers

6 hours per day of Continuing Education credits have been requested for licensed social workers, Marriage and Family Therapists, and LPC (Licensed Professional Counselors) from the Pennsylvania Board of Social Work Examiners.

### ACT 48 for School Personnel

Continuing Education credits have been requested for continuing professional education.

### CE Certificates

Continuing Education Certificates are available for one or both workshops at an additional cost of \$15.00.

## The Institute for Children and Families

1862 Charter Lane

Suite 100

Lancaster, PA 17601

Ph: 717-290-7040

Fx: 717-290-7044

[www.instituteforchildren.org](http://www.instituteforchildren.org)

## ICF Academy



The  
Institute for  
Children  
and  
Families

*proudly presents*

## Healing Disruptions in Attachment Traumas

*A two-day workshop for mental health professionals.*

### Day 1

### The Etchings of Trauma

Theory, Brain Research & Behaviors  
Related to Attachment Trauma

### Day 2

### Integrative Therapy

A Mind-Body Systems Approach  
to Trauma Healing

**Friday, April 30 & Saturday, May 1, 2010  
8:30 am ~ 4:30 pm**

The Institute for Children & Families  
Lancaster, PA